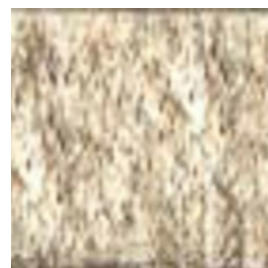
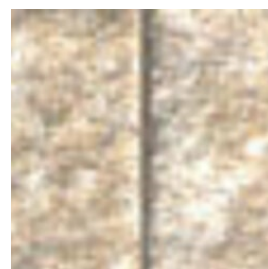


**RINN**

Den Anfang  
macht ein guter Stein.



CUT LENGTHWISE



CUT CROSSWISE

VIEW

## Catania Mauer rustica Creme-Beige

6 Alte Produkte  
Rinn Mein Garten

<https://www.rinn.net/> | [info@rinn.net](mailto:info@rinn.net)

Type: Stone | Building stone

mtextur ID	94625
Manufacturer	<a href="#">Rinn Mein Garten</a>
Manufacturer-Email	<a href="mailto:info@rinn.net">info@rinn.net</a>
Product Line	<a href="#">6 Alte Produkte</a>
Material Name	<a href="#">Catania Mauer rustica Creme-Beige</a>
Type	Stone / Building stone
eBKP	I 2.1 Retaining walls / I 2.2 Freestanding walls
IFC	IfcWall / IfcCovering
Area of application	Outside / Wall
Delivery zones	LU / DE / CH
Size of the CAD & BIM texture	Height: 3500.0 mm / Width: 3600.0 mm

Important legal notice regarding the use of the mtextur database and the mtextur datasheet

The mtextur database and the mtextur datasheets present a selection of digitally processed building materials, categorised by material type, subtype, colour range, field of application, manufacturer and product line. All content is provided for information and planning support purposes only and is non-binding. The colour appearance, pattern, surface characteristics and scale accuracy of the CAD & BIM textures may differ from the actual products supplied by the respective manufacturers. A binding or exact match cannot be guaranteed. For binding samples, technical specifications and product-specific details, only the respective manufacturer or distributor shall be authoritative. Please contact them directly for such information (enquiry link provided with the material). The content is compiled with due care and to the best of our knowledge. However, errors, omissions or deviations cannot be entirely excluded. The publisher of the mtextur database, h2c GmbH, as well as the listed manufacturers and distributors, accept no liability for the accuracy or completeness of the information provided, nor for any direct or indirect damages or consequential losses arising from the use of the mtextur database or the mtextur datasheets. Liability shall apply exclusively in cases of wilful misconduct.

**Important legal notice regarding the use of the mtextur database and the mtextur datasheet**

The mtextur database and the mtextur datasheets present a selection of digitally processed building materials, categorised by material type, subtype, colour range, field of application, manufacturer and product line. All content is provided for information and planning support purposes only and is non-binding. The colour appearance, pattern, surface characteristics and scale accuracy of the CAD & BIM textures may differ from the actual products supplied by the respective manufacturers. A binding or exact match cannot be guaranteed. For binding samples, technical specifications and product-specific details, only the respective manufacturer or distributor shall be authoritative. Please contact them directly for such information (enquiry link provided with the material). The content is compiled with due care and to the best of our knowledge. However, errors, omissions or deviations cannot be entirely excluded. The publisher of the mtextur database, h2c GmbH, as well as the listed manufacturers and distributors, accept no liability for the accuracy or completeness of the information provided, nor for any direct or indirect damages or consequential losses arising from the use of the mtextur database or the mtextur datasheets. Liability shall apply exclusively in cases of wilful misconduct.