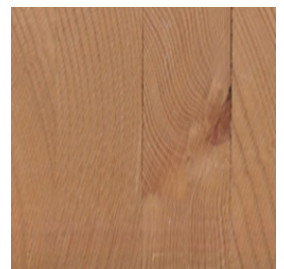




CUT LENGTHWISE



CUT CROSSWISE

VIEW

Sharp-edged milled - RAL 1013 | Oyster white
BRESTA® Sharp-edged milled | RAL colors
Tschopp Holzbau AG

<https://www.tschopp-holzbau.ch> | info@tschopp-holzbau.ch

Type: Wood | Solid wood system

| | |
|-------------------------------|--|
| mtextur ID | 84765 |
| Manufacturer | Tschopp Holzbau AG |
| Manufacturer-Email | info@tschopp-holzbau.ch |
| Product Line | BRESTA® Sharp-edged milled RAL colors |
| Material Name | Sharp-edged milled – RAL 1013 Oyster white |
| Type | Wood / Solid wood system |
| eBKP | C 4.1 Suspended slabs |
| IFC | IfcSlab / IfcCovering |
| Area of application | Inside / Ceiling / Roof / Wall / Facade |
| Delivery zones | LI / NO / DE / CH |
| Size of the CAD & BIM texture | Height: 1200.0 mm / Width: 1200.0 mm |

Important legal notice regarding the use of the mtextur database and the mtextur datasheet

The mtextur database and the mtextur datasheets present a selection of digitally processed building materials, categorised by material type, subtype, colour range, field of application, manufacturer and product line. All content is provided for information and planning support purposes only and is non-binding. The colour appearance, pattern, surface characteristics and scale accuracy of the CAD & BIM textures may differ from the actual products supplied by the respective manufacturers. A binding or exact match cannot be guaranteed. For binding samples, technical specifications and product-specific details, only the respective manufacturer or distributor shall be authoritative. Please contact them directly for such information (enquiry link provided with the material). The content is compiled with due care and to the best of our knowledge. However, errors, omissions or deviations cannot be entirely excluded. The publisher of the mtextur database, h2c GmbH, as well as the listed manufacturers and distributors, accept no liability for the accuracy or completeness of the information provided, nor for any direct or indirect damages or consequential losses arising from the use of the mtextur database or the mtextur datasheets. Liability shall apply exclusively in cases of wilful misconduct.

Important legal notice regarding the use of the mtextur database and the mtextur datasheet

The mtextur database and the mtextur datasheets present a selection of digitally processed building materials, categorised by material type, subtype, colour range, field of application, manufacturer and product line. All content is provided for information and planning support purposes only and is non-binding. The colour appearance, pattern, surface characteristics and scale accuracy of the CAD & BIM textures may differ from the actual products supplied by the respective manufacturers. A binding or exact match cannot be guaranteed. For binding samples, technical specifications and product-specific details, only the respective manufacturer or distributor shall be authoritative. Please contact them directly for such information (enquiry link provided with the material). The content is compiled with due care and to the best of our knowledge. However, errors, omissions or deviations cannot be entirely excluded. The publisher of the mtextur database, h2c GmbH, as well as the listed manufacturers and distributors, accept no liability for the accuracy or completeness of the information provided, nor for any direct or indirect damages or consequential losses arising from the use of the mtextur database or the mtextur datasheets. Liability shall apply exclusively in cases of wilful misconduct.